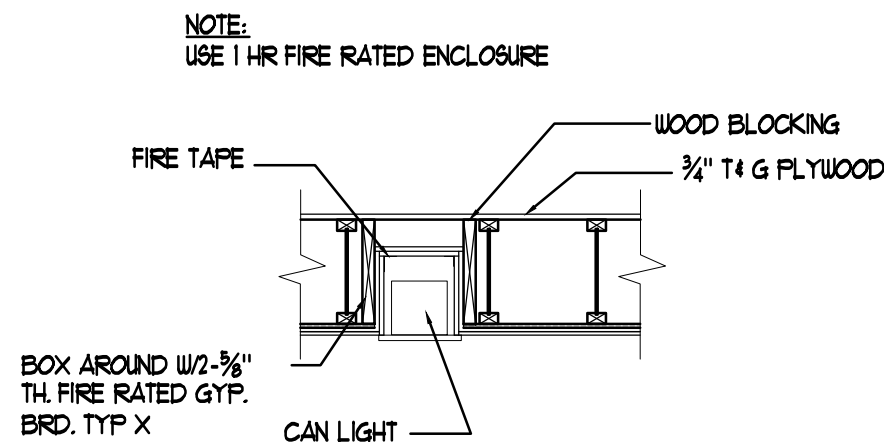


6. ALL DISHWASHERS SHOULD BE ON GFCI SOURCE.



USE 1 HR. FIRE RATED ENCLOSURE FOR ALL CEILING CANS.
USE TWO LAYERS OF 3/4" TH. TYPE X FIRE RATED GYP. BRD.

NOTE:
ALL METAL PIPING SYSTEMS, METAL PARTS OF ELECTRICAL EQUIPMENT, AND PUMP MOTORS ASSOCIATED WITH THE WHIRLPOOL TUB SHALL BE BONDED TOGETHER USING A COPPER BONDING JUMPER NO SMALLER THAN NO. 8 SOLID (ARTICLE 680.61(C)).

THE WHIRLPOOL TUB AND ITS ELECTRICAL COMPONENTS SHALL BE GFCI PROTECTED

NOTE:
1. BATHROOM FAN/LIGHT UNIT MUST BE SWITCHED SEPARATELY.

2. ALL BATHROOM FIXTURES, SWITCHES AND OUTLETS SHALL BE GFI PROTECTED. LIGHT FIXTURES OVER TUBS AND SHOWERS SHALL BE WATER AND VAPOR PROOF.

3. ALL DETECTORS SHALL BE 120 VOLT HARD WIRED, INTER-CONNECTED, WITH BATTERY BACK-UP.

4. FIXTURE BOXES TO BE RATED FOR INTENDED USE. BEDROOM AND KITCHEN FIXTURES BOXES SHOULD BE FAN RATED.

5. NEC 410.16 (C) CANS REQUIRED.

6. ALL DISHWASHERS SHOULD BE ON GFCI SOURCE.

ELECTRICAL LEGEND FOR RESIDENCE UNIT

- ⊖ ⊕ DUPLEX OUTLET • 12" AFF UNLESS OTHERWISE NOTED
- ⊖ ⊕ GFCI GROUND FAULT CIRCUIT INTERRUPTER w/ RESET BUTTON
- ⊖ ⊕ PHONE OUTLET • 12" AFF
- ⊖ ⊕ TV JACK
- ⊖ ⊕ DATA OUTLET • 12" AFF
- ⊖ ⊕ TOGGLE SWITCH
- ⊖ ⊕ WALL MOUNTED LIGHT FIXTURE
- ⊖ ⊕ CEILING MOUNTED LIGHT FIXTURE
- ⊖ ⊕ ALL CLOSET FIXTURES TO BE FLOURESCENT PER GOVERNING CODES.
- ⊖ ⊕ CEILING FULL CHAIN FIXTURE
- ⊖ ⊕ DOWNLIGHT BY: HALO #11 "FIT ALL" R1440 A=ACRYLIC, C=CHROME, W=WHITE B=BLACK, G=GOLD OR BRASS IN SLOPE CEILING USE HALO #441CAT
- ⊖ ⊕ PENDANT LIGHT
- ⊖ ⊕ MOTORS (PROVIDE POWER AS REQ'D BY MANUF)
- ⊖ ⊕ SMOKE DETECTOR ELECTRICALLY TIE ON A SEPARATE CIRCUIT TO RING SIMULTANEOUSLY w/ BATTERY BACK-UP w/ 120 VOLT TYP.
- ⊖ ⊕ CEILING EXHAUST FAN W/LIGHT
- ⊖ ⊕ FAN W/LIGHT
- ⊖ ⊕ J-BOX OR ELECTRICAL WHIP V.I.F.
- ⊖ ⊕ CARBON MONOXIDE
- ⊖ ⊕ DOORBELL
- ⊖ ⊕ SMOKE DETECTOR

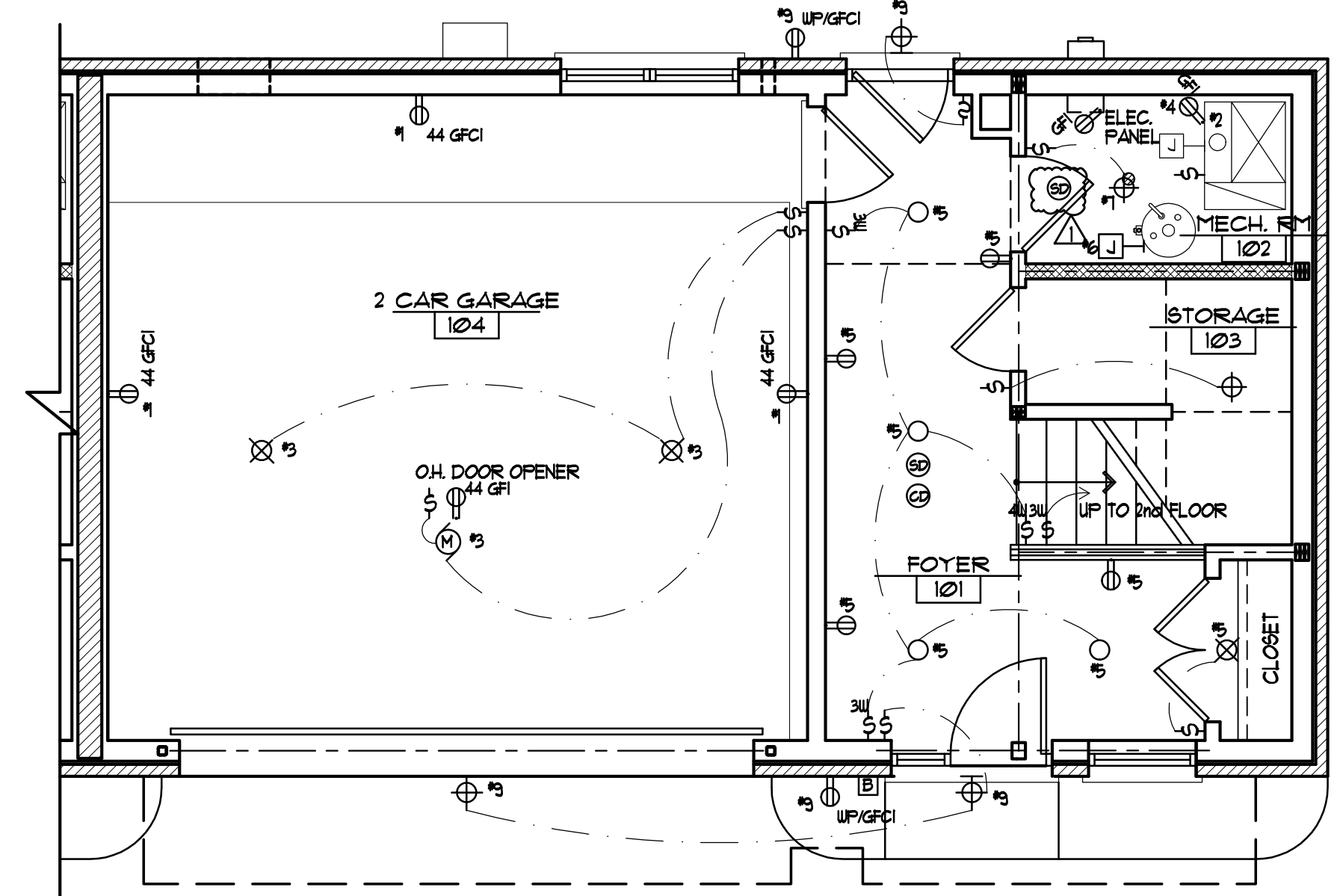
NOTE: ELECTRICAL SUB-CONTRACTOR TO FURNISH & INSTALL ALL INDICATED OUTLETS, SWITCHES & FIXTURES. UNSPECIFIED FIXTURES TO BE SELECTED AND SUPPLIED BY OWNER. INSTALLED BY ELECTRICAL CONTRACTOR

NOTE: ACRYLIC DOWNLIGHT - TO BE WUP/GFI PROTECTED FIXTURE (TYP. OVER ALL TUBS AND SHOWERS)

NOTE: ALL ELECTRICAL IS TO BE INSTALLED PER 2014 NEC
ALL BRANCH CIRCUIT THAT SUPPLY 125-VOLT SINGLE PHASE, 15 AND 20 AMP RECEPTACLE OUTLETS INSTALLED IN DWELLING UNIT BEDROOMS SHALL BE PROTECTED BY AN ARC-FAULT CIRCUIT INTERRUPTER

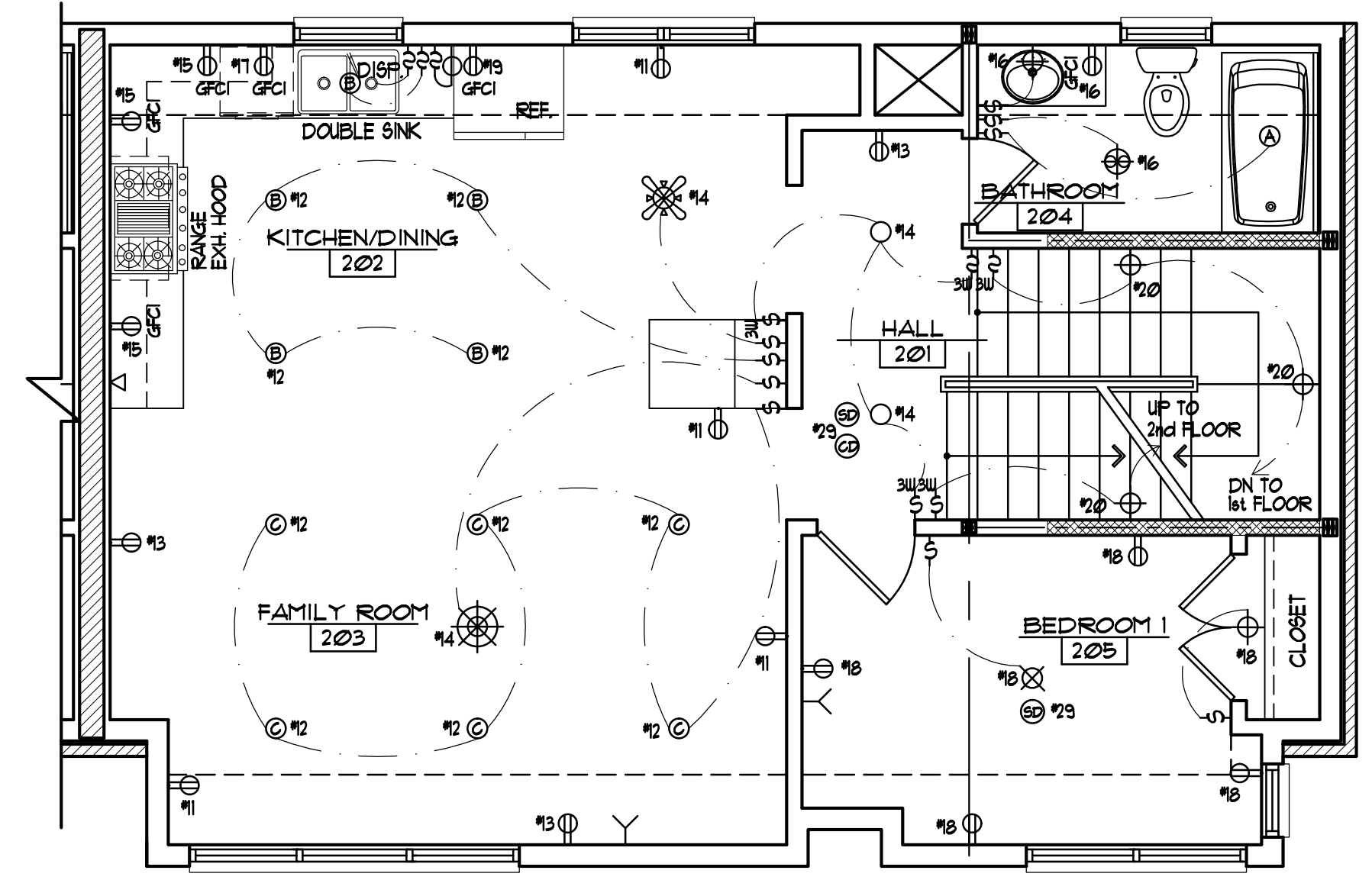
NOTE: NEW ELECTRICAL SERVICE

PANEL-LP-1 200A ELECT. PANEL 400A BUS		SURFACE MOUNTED		REMARKS
120/208V, 1 PHASE, 3 WIRE		MAINS 400A MLO 22000 AIC		
CCT NO.	DESCRIPTION	BREAKER SIZE/POLES	FH A VA	FH B VA
1	GARAGE OUTLETS	20 A	1000	
3	GARAGE OH MOTOR & LIGHTS	15 A		640
5	1st FLOOR FOYER OUTL. & LIGHTS	20 A	880	
7	MECHANICAL & STORAGE LIGHTS	15 A		60
9	OUTDOOR LIGHTS & OUTLETS	20 A	880	
11	2nd FLOOR OUTLETS	15 A		800
13	2nd FLOOR OUTLETS	15 A	600	
15	KITCHEN COUNTER OUTLETS	20 A		1000
17	RANGE EXHAUST HOOD	15A	200	
19	RANGE	15 A		600
21	RANGE OVEN	1 P	3000	
23	RANGE OVEN	30 A		3000
25	BEDROOM #2	15 A	850	
27	BEDROOM #3	15 A		850
29	SMOKE DETECTORS	15 A	140	
31				
33	SPARES			
35				
37				
39				
41				
2	1st FLOOR FURNACE	20 A	300	
4	FURNACE OUTLET	15 A		300
6	HUH FAN	15 A	200	
8	A/C	1 P		3500
10	A/C	35 A	3500	
12	FAMILY/KITCHEN LIGHTS	15 A		200
14	KITCHEN/DINING/HALL LIGHTS	15 A	340	
16	2nd FLOOR BATHROOM	20 A		1060
18	BEDROOM #1	15 A	850	
20	STAIRCASE LIGHTS	15 A		150
22	MASTER BEDROOM	15 A	1130	
24	MASTER BATH	20 A		1920
26	HALL BATH	20 A	1060	
28	WASH & DRYER	15 A		800
30				
32	SPARES			
34				
36				
38				
40				
42				
	CONNECTED PHASE VA		14,930	14,880
	TOTAL CONNECTED VA		29,810	kW
	TOTAL CONNECTED AMPS		124.21	A



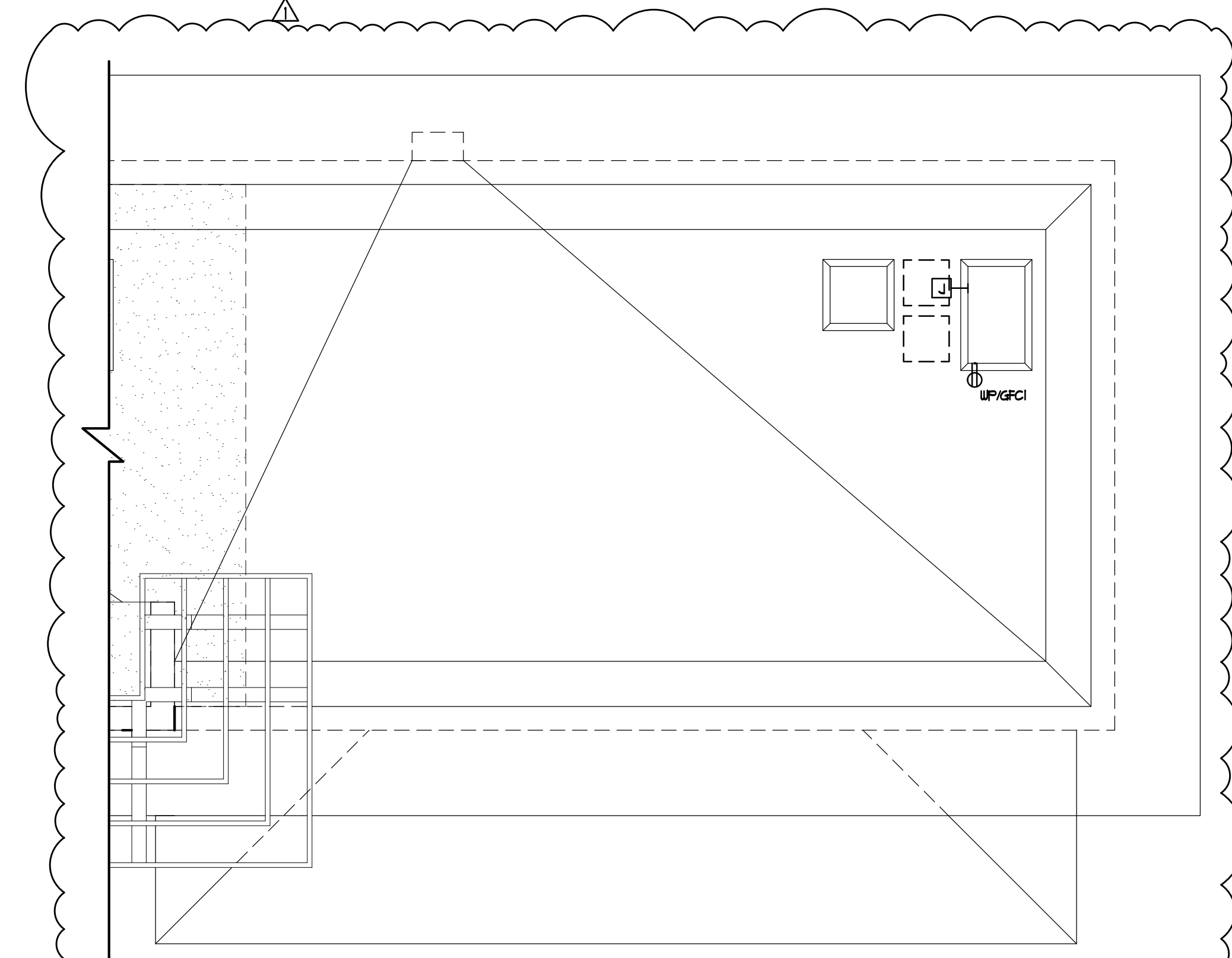
1st FLOOR ELEC. PLAN FOR TYP. UNIT

SCALE: 1/4" = 1'-0"



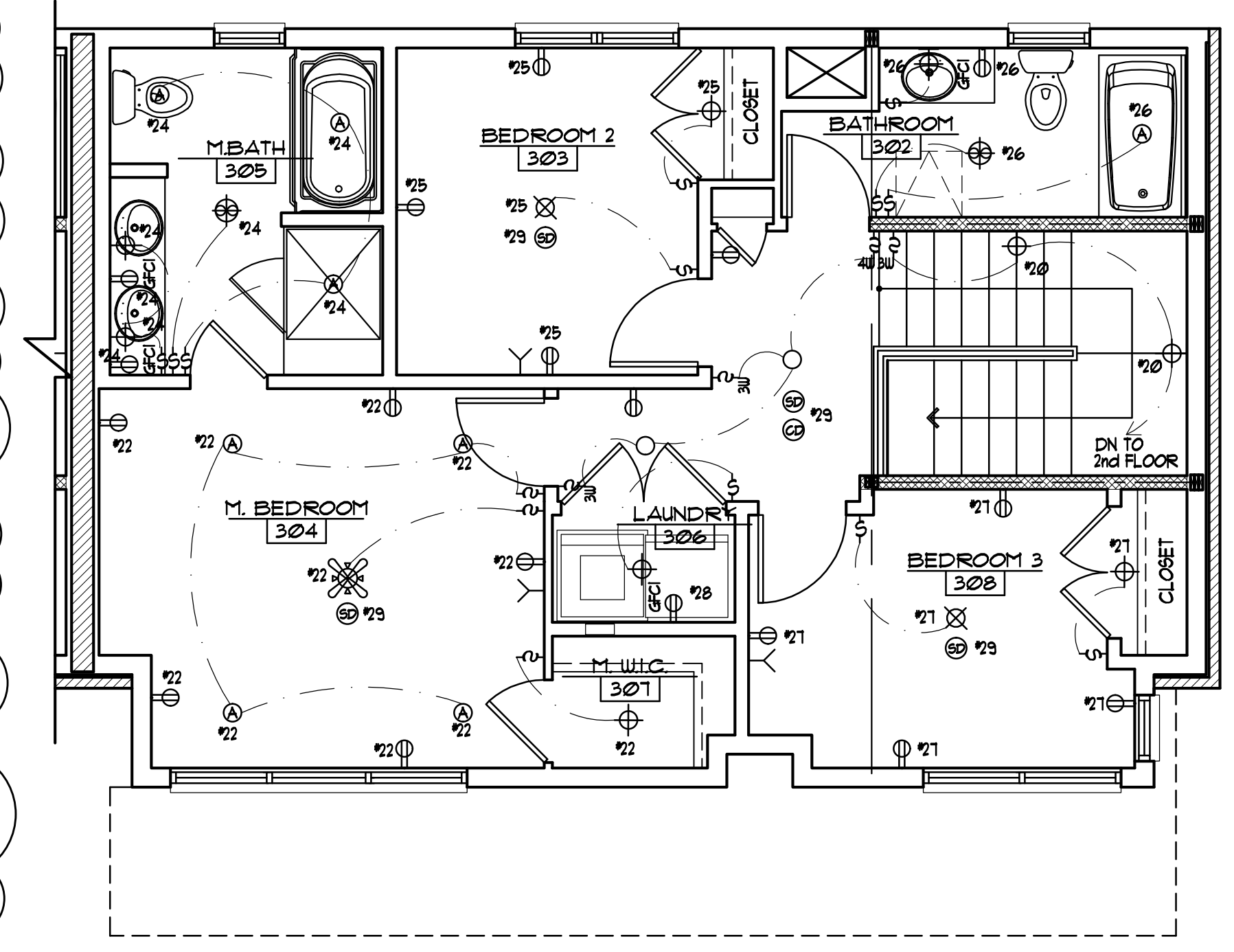
2nd FLOOR ELEC. PLAN FOR TYP. UNIT

SCALE: 1/4" = 1'-0"



ROOF PARTIAL PLAN

SCALE: 1/4" = 1'-0"



2nd FLOOR ELEC. PLAN FOR TYP. UNIT

SCALE: 1/4" = 1'-0"

ANTONIO FANIZZA ASSOC. LTD
ARCHITECTS
2343 LECANER LANE
DES PLAINES, ILLINOIS 60016
TEL: (847) 823-5664 FAX: (847) 823-1664
E-MAIL: ANTONIO.FANIZZA@CCREBUILDERS.COM

© 2016 ANTONIO FANIZZA ASSOC. LTD. THESE DRAWINGS AND SPECIFICATIONS ARE PROPERTY OF ANTONIO FANIZZA ASSOC. LTD. AND ARE NOT TO BE REPRODUCED, COPIED, OR TRANSMITTED IN ANY FORM OR BY ANY MEANS, WITHOUT WRITTEN AUTHORIZATION. UNAUTHORIZED USE IS NOT ALLOWED. IT IS FURTHER ADVISED PRIOR TO DRAWING USE, ALL FEES HAVE BEEN PAID IN FULL. FAILURE TO DO SO, THE USER WILL BE RESPONSIBLE FOR ALL COURT COST AND LEGAL FEES.

I HEREBY CERTIFY THAT THIS PLAN AND SPECIFICATION WAS PREPARED BY ME OR UNDER MY DIRECT SUPERVISION AND THAT I AM A DULY REGISTERED ARCHITECT UNDER THE LAWS OF THE STATE OF ILLINOIS AND THE VILLAGE OF SKOKIE COOPER AND ORDINANCE THEY ARE IN COMPLIANCE WITH ALL APPLICABLE CODES INCLUDING THE ENVIRONMENTAL BARBERS ACT (605 ILCS 205) AND THE ILLINOIS ACCESSIBILITY CODE (23 ILCS 106.000) AS SANCTIONED BY MY HAND AND SEAL.

NO.	REVISION
1	PER CITY COMMENTS 12/20/16
2	PER CITY COMMENT #6/24/2017
3	PER CITY COMMENT #6/26/2017
4	PER DOT REQUIREMENTS #12/26/17

CERTIFICATION AND SEAL

DRAWING NAME:
ELEC. PLANS @ TYP. RESIDENTIAL UNIT

PROJECT NAME:
KANDU TOWNHOMES
8463 LINCOLN AVE
SKOKIE, ILLINOIS

released to const.
job no. 1651
scale AS SHOWN
date 10.14.2016
drawn by LW
checked by AF
sheet

E-1.0

FOR PERMIT ONLY